



SchoolExpress

SchoolExpress.com

Come visit us. We have many free items.

16,000+ Free Worksheets, many subjects

- **Create your own worksheets too - spelling, quizzes, word searches, word walls, sentences, awards, word unscrambles**
- **Online Math - do problems online, worksheets are graded and can be printed**
- **Funtime Games - A safe place for children to play games online**

Sign up for the SchoolExpress.com newsletter,
and receive one FREE Thematic Unit every week.

SchoolExpress.com/news_sub.php

We have a large selection of Thematic Units and eWorkbooks.
These can be downloaded for \$2.00 each.

ishoptoday.com

Theme Units are available for the following subjects:

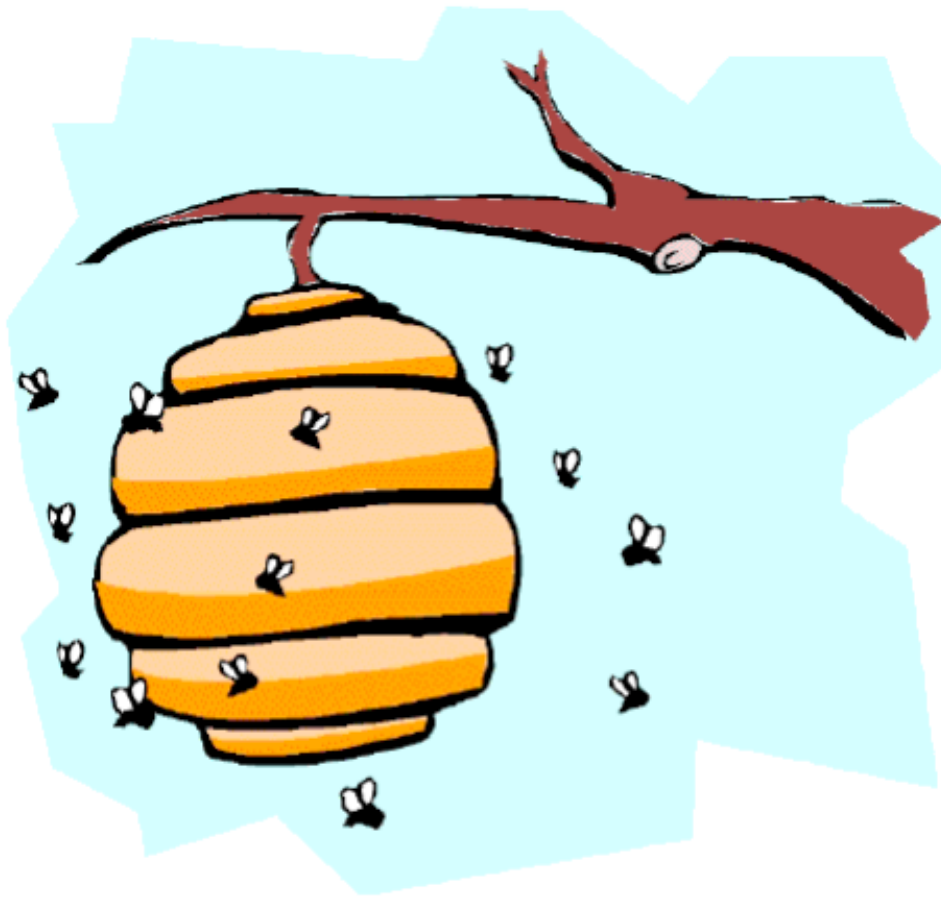
Famous People, Geography, History, Science, Social Studies

eWorkbooks are available for the following subjects:

Math, Phonics, Language Arts, Writing, Handwriting and more.

Visit the SchoolExpress.com home page.

Bees



Name _____

Date _____

Bees

The bee is a very important insect.

It lives in all parts of the world except the South and North Poles.

There are over 15,000 different kinds of bees.

Scientists separate bees into two main groups.

1. Solitary bees live alone.

2. Social bees live in colonies.

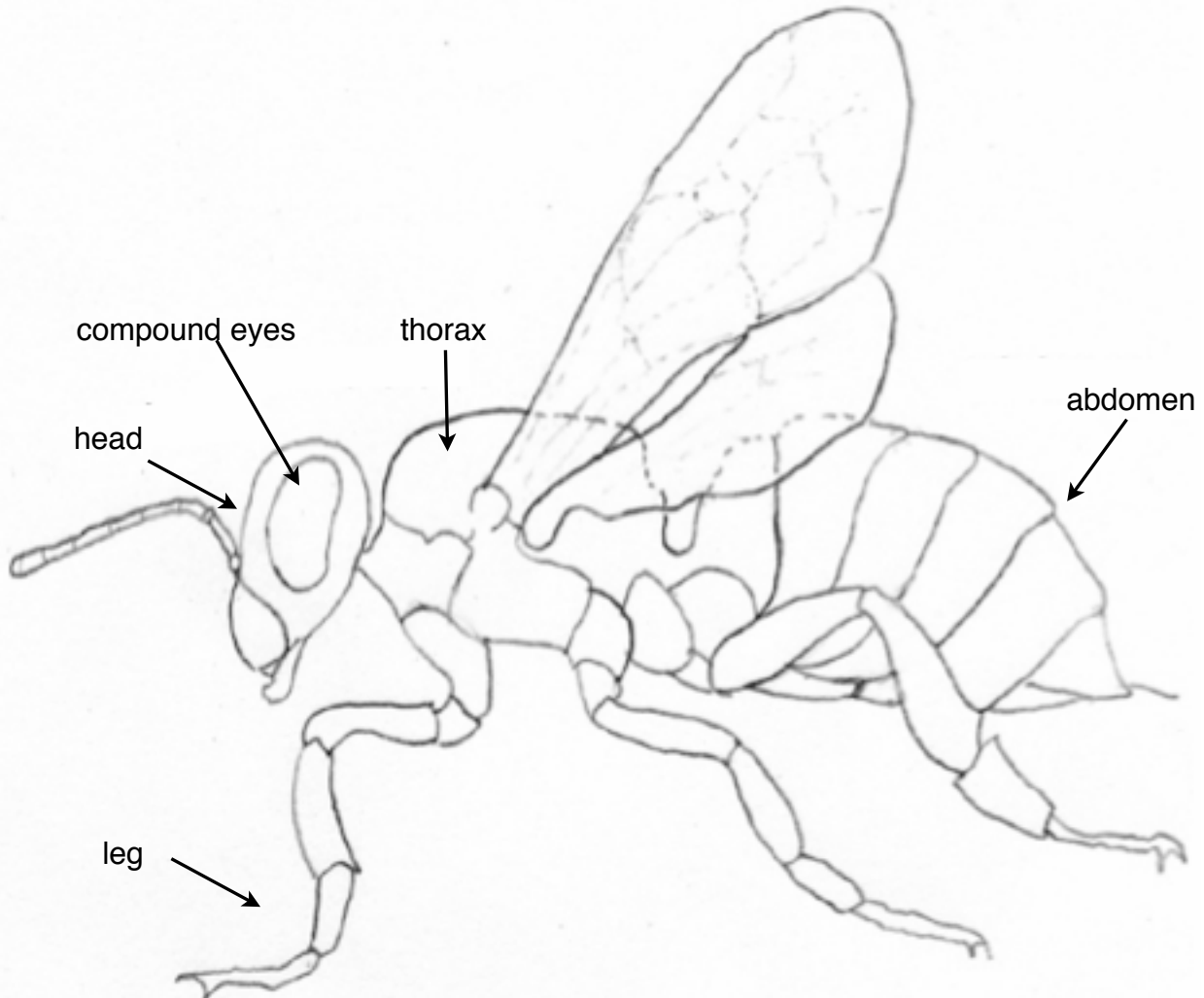


A bee's body is divided into three parts: the head, the thorax or chest, and the abdomen. A bee has large compound eyes on each side of its head. It has three tiny eyes on top of its head.

A bee has six legs. Three legs are attached on each side of the thorax. The hind legs are used to carry pollen. The wings of the bee can move back and forth and up and down. It can fly backwards, forward, sideways, and it can hover.

Bees have feelers called antennae. They are attached to the bees head. The antennae are used for smelling and touch. The bee uses its tube-shaped tongue to take nectar, water, and honey into its mouth. It is on the outside of its head. Strong muscles are on the inside of its mouth.

Bees



Read each sentence. Refer to page one for the answers. Fill in the missing words below.

1. Bees have feelers called _____.
2. A bee's body is divided into _____ parts.
3. A bee has _____ legs.
4. The hind legs are used to carry _____.

Bees

Queen - Drones - Workers

The best known bees are the honey or hive bees. They work and live together in large groups. The honeybees form a colony with tens of thousands of bees. There are three kinds of bees in the hive or nest. There is one queen bee, the drones, and the workers.



The worker bee uses its stinger for self-protection. It is usually straight and has hooks or barbs on it. The queen bee uses her stinger only to kill other queens. Drones do not have stingers.

The hive or nest is built with thousands of cells. The bees build wax cells for storing pollen, eggs, and honey. They keep adding cells to the hive. The cells have six sides and are open in the front. They are waterproof.

Bees guard the entrance to the hive. They fan the air with their wings to air out the hive or nest. More than 50,000 bees can live in one hive or nest at a time.



The queen starts to lay eggs as soon as the workers have a few cells built. The queen honeybee lays the eggs. They hatch into thousands of worker bees. The queen does not do any work except lay eggs.

Workers feed and care for the queen bee. The bees of the colony become excited and disorganized if the queen bee is not in the nest or hive.

Find the answer below in books or on the Internet. Write your answer in complete sentence.

What is the process for making honey?

Bees

EGG - LARVA - PUPA - ADULT

After the queen lays the eggs, a worm like larva crawls out. The workers begin to feed it immediately. Five days later, the larva weaves a cocoon. The cocoon is called a pupa.

The larva remains inside for three weeks. It gradually turns into a bee. The worker takes 21 days to become an adult. The drone takes 24 days to become an adult.

The drones are the male honeybees. Their only job is to mate with the queen bee. Drones are clumsy bees. They do not have stingers. The workers let the drones die in the fall. They do this because the drones would eat too much stored honey. They are no longer useful to the colony.



The bees you see gathering nectar and pollen from flowers are the workers. They do all the work in the hive. All workers are females.

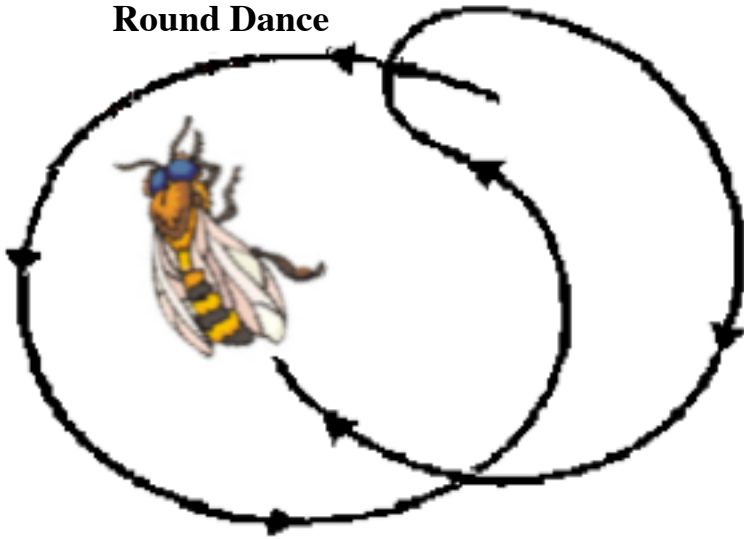
Shortly after the worker bee hatches it begins to work. Its first job is to feed the larvae. It also stores honey and pollen in the cells. After a few weeks the worker is old enough to leave the hive and find pollen, water, and nectar.

Bees

The workers never stop working from the time they are born until they die. When workers find food they do a special dance to tell the other bees where to find food.

Two kind of dances that bees are known to do are called the “round dance” and the “waggle dance”.

Round Dance



Waggle Dance



Flowers produce nectar and pollen. Worker bees suck up the nectar. They store it in sacs in their stomachs.

Pollen from flowers cling to the pollen baskets on the hind legs of the bees. The bees take the nectar and pollen back to the hive.



When the worker returns to the cell, it puts its hind legs into the cell and kicks off the pollen. Other worker bees push the pollen to the bottom of the cell.

The worker sucks the nectar from its stomach and places it in an empty cell. The worker bee puts a wax cap on the honey filled cells.

Bees



When a colony of bees becomes too big the queen stops laying eggs. The workers build cells for a new queen.

The workers choose a few larvae to become queens. They feed them royal jelly. The royal jelly causes the larvae to become queen bees.

If more than one queen hatches at the same time, they fight until one stings the other to death.

The workers and old queen then leave the hive in a swarm. Some workers remain with the old hive to take care of the new queen.



Draw a picture of a bee hive. You may need to look in books for examples.

Bees



Bumblebees are another well known bee. They are big, black and yellow bees. They are social bees, and live in colonies. They are friends of farmers.

Bumblebees pollinate or fertilize many plants. They carry pollen from one flower to another. Bumblebees do not build hives. They make nests in grass or in small holes.

Beekeeping is a large industry in the United States. Beekeepers sell thousands of pounds of honey.

Beekeepers build hives for their bees.

The hives have removable sections.

Bees build honeycombs on the frames.

Some beekeepers rent their hives to farmers.

Farmers use them to pollinate their fields.



Read the words below. Write a definition for each on the lines.

1. pollinate _____

2. honeycombs _____



Bees

MULTIPLE CHOICE

Write the correct answer on the line.

1. Bees are _____.
a. mammals b. insects c. birds
2. The bee only has four legs. _____
true false
3. There are _____ kinds of bees in the hive or nest.
three four five
4. The hive is built with thousands of _____ .
a. muscles b. cells c. birds
5. The drones feed and care for the queen bee. _____
true false
6. The larva weaves a _____ .
cocoon web hive
7. The _____ are the male honeybees.
a. queens b. workers c. drones
8. When workers find food they do a special dance. _____
true false



Bees



MULTIPLE CHOICE
Write the correct answer on the line.

1. Worker bees store _____ in the sacs of their stomachs.
pollen nectar wax
2. The worker kicks _____ off its legs.
a. nectar b. jelly c. pollen
3. If a new queen bee is needed the workers feed the larvae royal jelly. _____
true false
4. The workers and the old queen leave in a _____.
swarm hurry hive
5. The bumblebee is black and _____.
a. yellow b. white c. blue
6. Bumblebees build hives. _____
true false
7. Beekeepers sell thousands of pounds of _____.
honey hives bees
8. Bees build _____ on the frames.
a. honeycombs b. web c. hives





Bees

Drawing Fun Draw a picture of a bee. You might want to add flowers and a hive.

A large, empty rectangular box with a thin black border, intended for a drawing of a bee and related elements like flowers and a hive.

Bees

WORD UNSCRAMBLE

Unscramble each word and print the word on the line.



stniec

lolnpe

eunqe

kroewr

nraetc

mwsra

Bees

Spelling

Print the correct spelling word on the line.



1. insect
insekt
innsect

2. pollin
paulin
pollen

3. quene
queen
quewene

4. stomak
stumack
stomach

5. mushels
muscles
motels

6. honeybee
honibee
huneybee

Bees

WORD FIND

Find and circle these words.
They run down, across, and diagonally.



insect
honey
wings

thorax
pollen
queen

antennae
hives
drones

nectar
colony
workers

i c h g n r y v w o r k e r s
n r u i e t n p a f p m a w s
s h h p v n m o s t h o r a x
e e o h u e t l m y n r y j k
c l n h a r s l e s q u e e n
t p e m e f b e e p p b l d i
e f y c l e a n c r n e w r n
d u g t y n t c h s e k i j g
w l c o l o n y o a c f q s s
i r w e w r h j v d t k o p n
n b i d r o n e s b a e w s g
g r i v s w b x b s r m p g b
s t j u m v m a n t e n n a e

Bees

CRISS CROSS

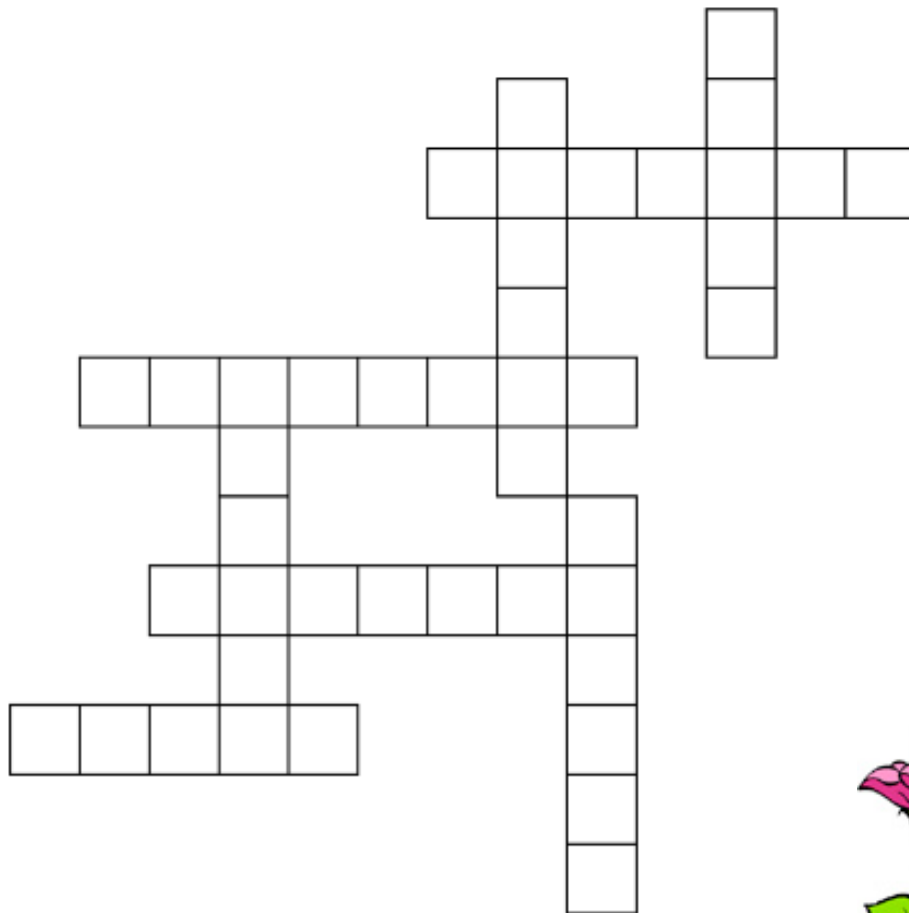
Can you fit these words into the criss cross?
Use a pencil so you can erase if you need to.

workers
honeybee

drones
stinger

queen
pollen

nectar
swarm



Bees

Answers

Page 8 - insects, false, three, cells, true, cocoon, drones, true

Page 9 - nectar, pollen, true, swarm, yellow, false, honey, honeycombs

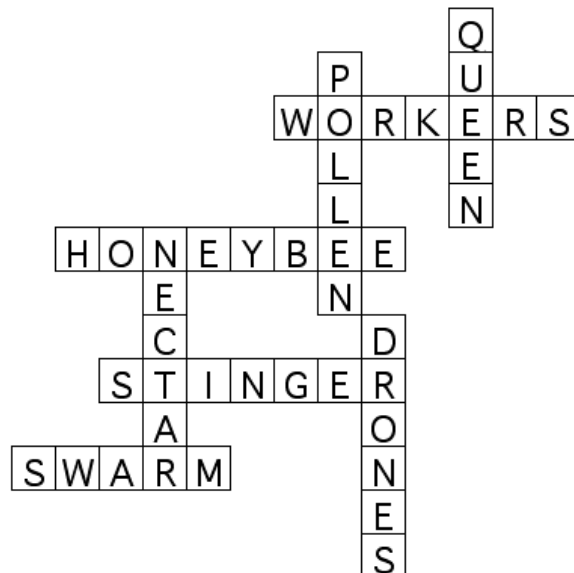
Page 11 - insect, pollen, queen, worker, nectar, swarm

Page 12 - insect, pollen, queen, stomach, muscles, honeybee

Page 13 -

i c h g n r y v w o r k e r s
n r u i e t n p a f p m a w s
s h h p v n m o s t h o r a x
e e o h u e t l m y n r y j k
c l n h a r s l e s q u e e n
t p e m e f b e e p p b l d i
e f y c l e a n c r n e w r n
d u g t y n t c h s e k i j g
w l c o l o n y o a c f q s s
i r w e w r h j v d t k o p n
n b i d r o n e s b a e w s g
g r i v s w b x b s r m p g b
s t j u m v m a n t e n n a e

Page 14 -



Legal and Copyright Information

This eWorkbook pdf file is copyrighted. You may copy the pdf file onto your hard drive, a CD rom, or other storage media for your own use. You may make backup copies of this pdf file for your own use.

You may not legally distribute this eWorkbook pdf file. If you know others who would like to use the pdf file please refer them to www.ishoptoday.com where they will find access to this pdf file and hundreds of others.

You may print copies of the worksheet pages in this pdf file for use with your students in your school classroom or your children in your home. You may print copies of the worksheet pages in this pdf file if you have purchased this eWorkbook pdf file for use with children in an organization such as Brownies or Cub Scouts. You may not share the pdf file or printed pages with other persons. Please contact us at info@schoolexpress.com if you have any concerns or questions.

Under no circumstances may this eWorkbook pdf file be reproduced to sell without the written consent of Comp Ed, Inc. This eWorkbook pdf file may not be stored on any Internet server. This eWorkbook pdf file may not be given away at any website or through any online or offline newsletter without the written consent of Comp Ed, Inc.